

MPS Catalog Number:

S1 40 90 078 MX AL 051

Date:

01/23/2014

**END FITTINGS**

Tower End Fitting:

Y-Clevis (Forged Steel)

Line End Fitting:

Eye (Forged Steel)

**MATERIAL**

Corona Ring (Tower):

None

Corona Ring (Line):

None

Corona Rings are recommended for applications of 230 kV and above

Number of Sheds:

25 large 26 standard

Rod Diameter:

16 mm

Weight Estimate:

15.2 lbs 6.9 kg

**DIMENSIONAL VALUES**

Section Length (L):

91.6 in 2,327 mm

Rubber Length (X):

78.3 in 1,989 mm

Standard Shed Height (P1):

1.5 in 38 mm

Large Shed Height (P2):

2 in 51 mm

Projection Ratio (S/P):

- 1.5

Shed Spacing (S):

3 in 76 mm

Dry Arc Distance:

80.7 in 2,050 mm

Leakage Distance:

231.6 in 5,883 mm

**ELECTRICAL VALUES**

60 Hz Dry Flashover:

783 kV Min. Withstand: 707 kV

60 Hz Wet Flashover:

670 kV Min. Withstand: 583 kV

Pos. Critical Impulse Flashover:

1,302 kV Min. Withstand: 1,161 kV

Neg. Critical Impulse Flashover:

1,362 kV Min. Withstand: 1,221 kV

**MECHANICAL VALUES**

Specified Mech. Load (SML):

25,000 lbs 111.2 kN

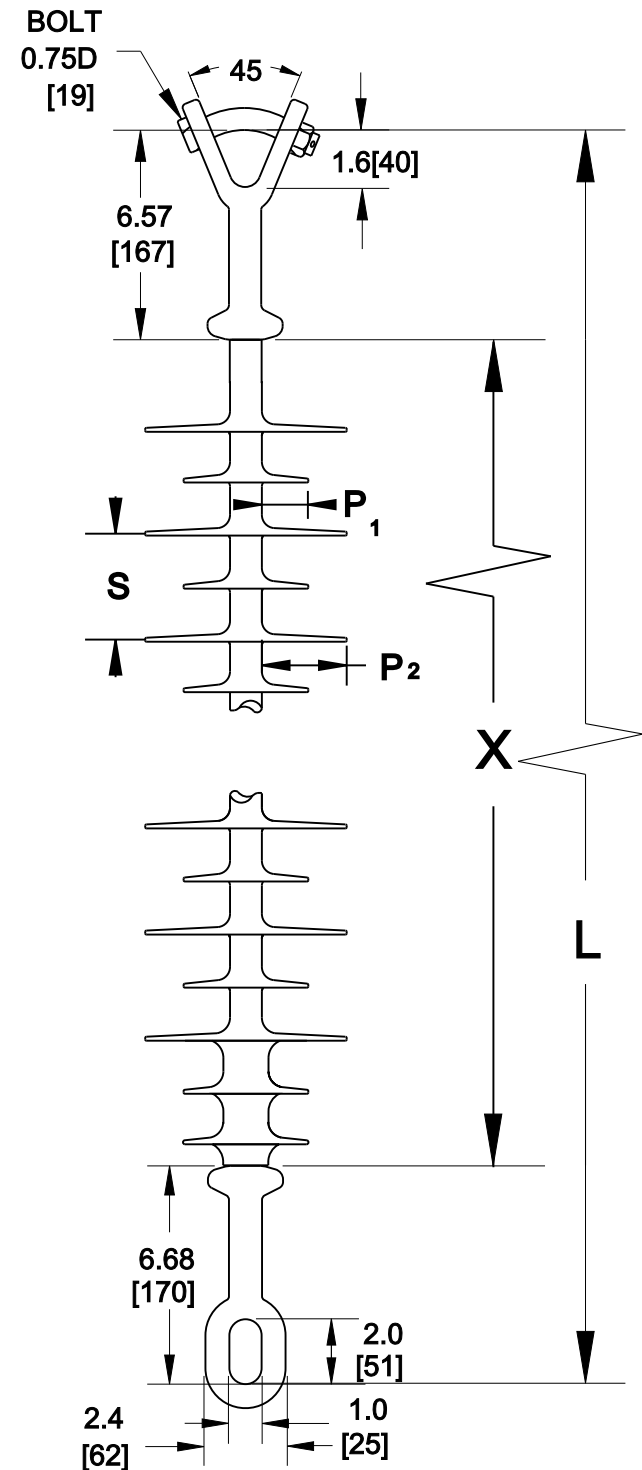
Routine Test Load (RTL):

12,500 lbs 55.6 kN

This drawing contains confidential information that is property of MacLean Power L.L.C ('MacLean'). Use of MacLean's confidential information without MacLean's express written consent is strictly prohibited and may expose you to legal liability. If you believe that you received this material in error, please destroy it or return it to 'MacLean Power, L.L.C., 7801 Park Place Rd, York, SC, 29745, USA.'

Dimensions: inches [millimeters]

Note: Drawing not actual depiction of insulator appearance



Silicone Rubber Sheath & Sheds  
Complies with applicable ANSI and IEC standards.